

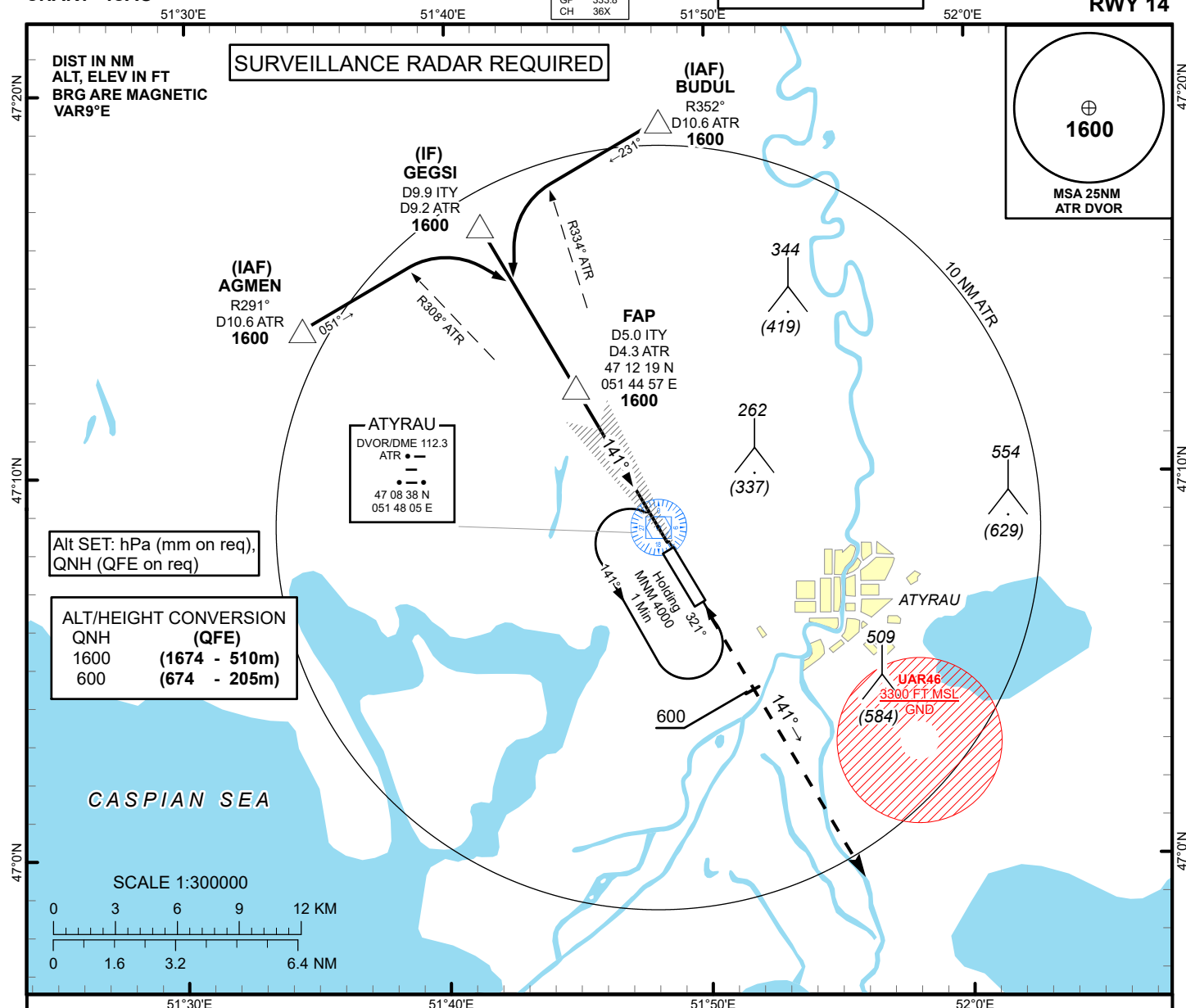
INSTRUMENT
APPROACH
CHART - ICAO

AERODROME ELEV -72 FT
HEIGHTS RELATED TO
THR RWY 14 - ELEV -74 FT

ILS/DME	
LLZ	109.9
ITY	● ●
	—
	— ● — —
GP	333.8
CH	36X

ATYRAU TOWER 118.1
ATYRAU ATIS (EN) 127.4
ATYRAU ATIS (RU) 126.6

ATYRAU
ILS/DME CAT I & II
RWY 14



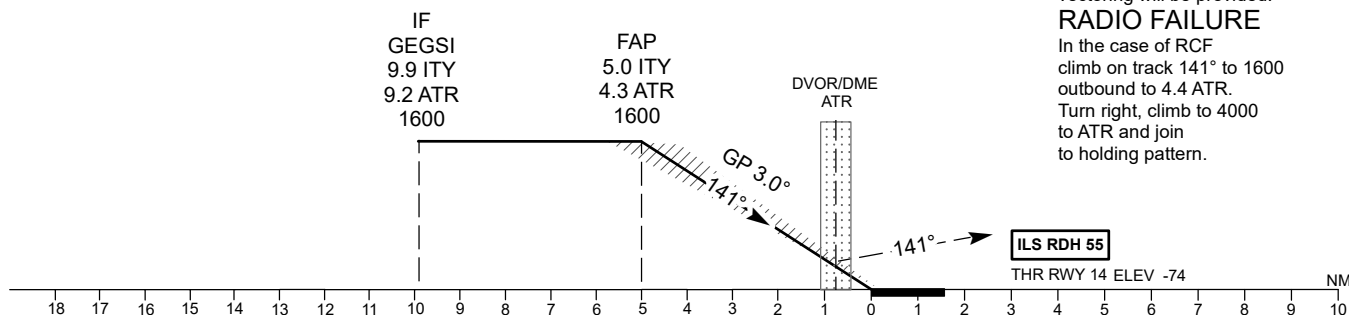
TRANSITION ALT
10000

MISSED APPROACH

Climb on track 141° to 1600.
After passing 600 radar
vectoring will be provided.

RADIO FAILURE

In the case of RCF
climb on track 141° to 1600
outbound to 4.4 ATR.
Turn right, climb to 4000
to ATR and join
to holding pattern.



CHANGE: Missed approach.

Aircraft Category		A	B	C	D	DIST to THR DME ITY	NM	1	2	3	4	5	
Straight-in Approach OCA/H						DME ATR	NM	0.3	1.3	2.3	3.3	4.3	
	CAT I	126(200)	126(200)	126(200)	126(200)	ALTITUDE	FT	300	621	944	1268	1600	
	CAT II	37(111)	47(121)	57(131)	67(141)	HEIGHT	FT	(374)	(695)	(1018)	(1342)	(1674)	
Aerodrome Operating Minima DH ft x RVR (CMV)	CAT I					DME ITY ZERO RANGED TO THR RWY 14							
	CAT II												
						GS	Kt	80	100	120	140	160	180
						Desc.Rate(5.2%)	ft/min	420	530	630	740	840	950

ATYRAU
ILS/DME CAT I, II

AERONAUTICAL DATA TABULATION

ILS approach to RWY14 from AGMEN, GEGSI, BUDUL	
Fix/point	Coordinates
ATR DVOR/DME	47° 08' 38,2"N 051° 48' 05,4"E
(FAP) ITY D5.0, ATR D4.3	47° 12' 19,46"N 051° 44' 56,88"E
GEGSI (IF) D9.2 ATR	47° 16' 34,26"N 051° 41' 19,19"E
AGMEN (IAF) R291°ATR, D10.6 ATR	47° 13' 51,60"N 051° 34' 27,75"E
BUDUL (IAF) R352°ATR, D10.6 ATR	47° 19' 16,51"N 051° 48' 11,32"E
THR RWY 14	47° 08' 01.45"N 051° 48' 36.66"E
ITY LOC	47° 06' 19.6"N 051° 50' 03.2"E